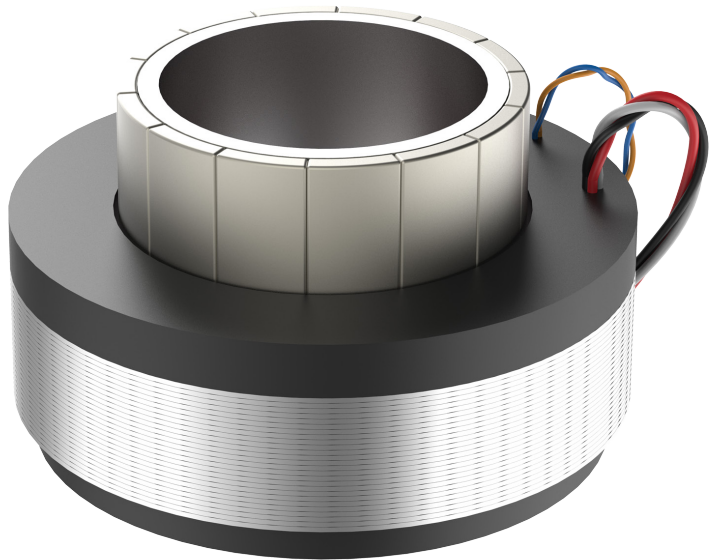


HIGH POWER IN COMPACT DESIGN

# FRAMELESS MOTORS



## LIGHT & COMPACT FRAMELESS MOTORS

Rozum Robotics frameless motors technology means great efficiency in very compact design. Whenever there is need for high power in a confined space, the motors' low weight, remarkable performance, excellent speed control and a wealth of adjustment options let you get an ideal solution for your compact system.

MODEL	FMI501200	FMI601201	FMI701401	FMI852001
Diameter	41 mm	51 mm	60 mm	75 mm
Power	155 W	200 W	320 W	550 W
Rated torque	240 mNm	320 mNm	510 mNm	880 mNm
Peak torque	720 mNm	960 mNm	1530 mNm	2640 mNm
Rated speed	6000 rpm	6000 rpm	6000 rpm	6000 rpm
Length	21 mm	21 mm	24 mm	31 mm
Weight	90 g	130 g	200 g	470 g

## COUNTLESS CONFIGURATION OPTIONS

Standard motors can be adjusted for your needs. Countless options let you configure a motor that better fits your system. Possible options for standard motors include: hall sensors, thermal sensor types, wire length, shaft and housing and more.

## CUSTOM DESIGNED MOTORS

We understand that quite often, a standard motor with adjustments is still not the one. Therefore, we are ready to deliver a fully custom motor for your specific needs.

You can get the exact-fit motor for your system, that suits your priority requirements, e.g. efficiency, cost, size, weight, torque/speed etc., without compromising on any motor features.

## POSSIBLE CHARACTERISTICS OF CUSTOM FRAMELESS MOTORS

CONSTRUCTION	ELECTRICAL & MECHANICAL
<b>Diameter:</b> 30 - 100 mm	<b>Voltage:</b> 12/24/48/220V
<b>Stack height:</b> 5-71	<b>Power:</b> 10-1000W
<b>Inrunner/Outrunner*</b> Optimal for some applications like rotating platform, winch, motor wheel, model aircraft, electric bike etc.	<b>Torque/Speed optimization**</b> **Always optimized per clients needs
<b>Winding:</b> Y/ $\Delta$	OPTIONS
<b>Stator:</b> straight/skewed	<b>Cooling:</b> None/Air
<b>Tooth:</b> T/I	<b>Feedback type:</b> None/Hall/Encoder ready
<b>Rare earth magnets</b> (neodymium/samarium-cobalt)	<b>Thermal sensor:</b> None/PTC/NTC/KTY/Thermal switch
<b>Number of phases</b>	<b>Environment adjustments and IP rating</b>
<b>Wires:</b> Position (Back/Side), Connectors (Terminals/Soldered wires/Molex), Length (from 200 mm), Material (polyvinyl chloride/polyolefin/fluorinate)	<b>Housing, fittings, shaft, controller**</b> ***Based on our frameless motors, we can build servomotors of any custom design, featuring characteristics needed by your specific task.

No matter whether you are at the stage of an idea, or already have the exact requirements, we can help.

Please contact us with any questions on a custom project you are thinking about. We can discuss your projects and ideas and think of possible solutions, no obligation on your part.

## NOTES

---

---

---

---

---

---

---

---

---

---

---

---

---

---

---

---

---

---

---

---

---

---

---

---

---

---



### WEBSITE:

[WWW.ROZUM.COM](http://WWW.ROZUM.COM)

### NORTH AMERICA:

Rozum Robotics INC

491 N Orinda Ct, Mountain House, CA,  
95391, United States

Phone: 1 408 4170336

### EMAILS:

**SALES:** [SALES@ROZUM.COM](mailto:SALES@ROZUM.COM)

**R&D:** [RD@ROZUM.COM](mailto:RD@ROZUM.COM)

### EUROPE:

BelServoDrvie LTD

Olshevskogo str., 20/11, office 22, Minsk  
Belarus

Phone: 375 33 376 04 60