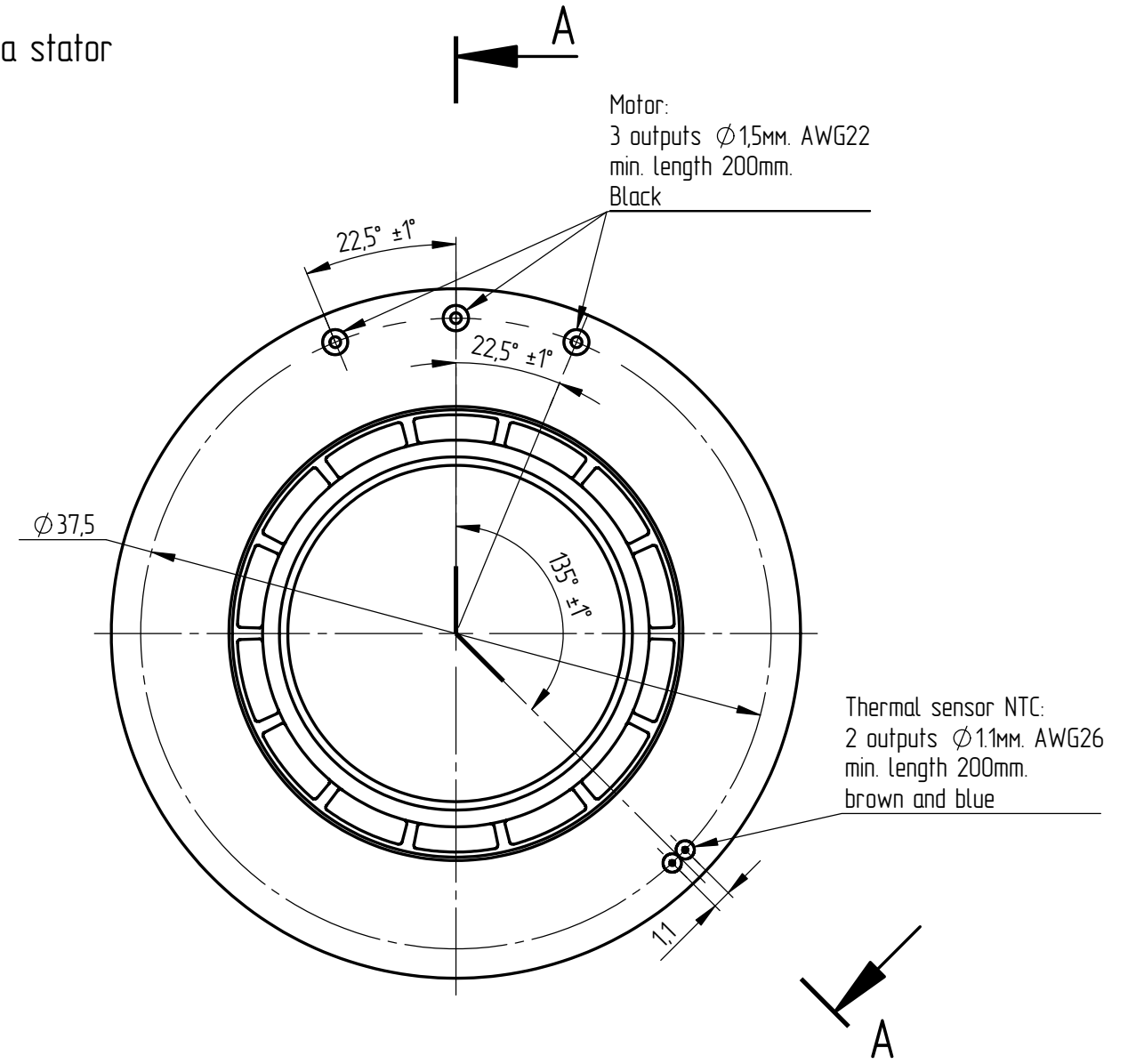
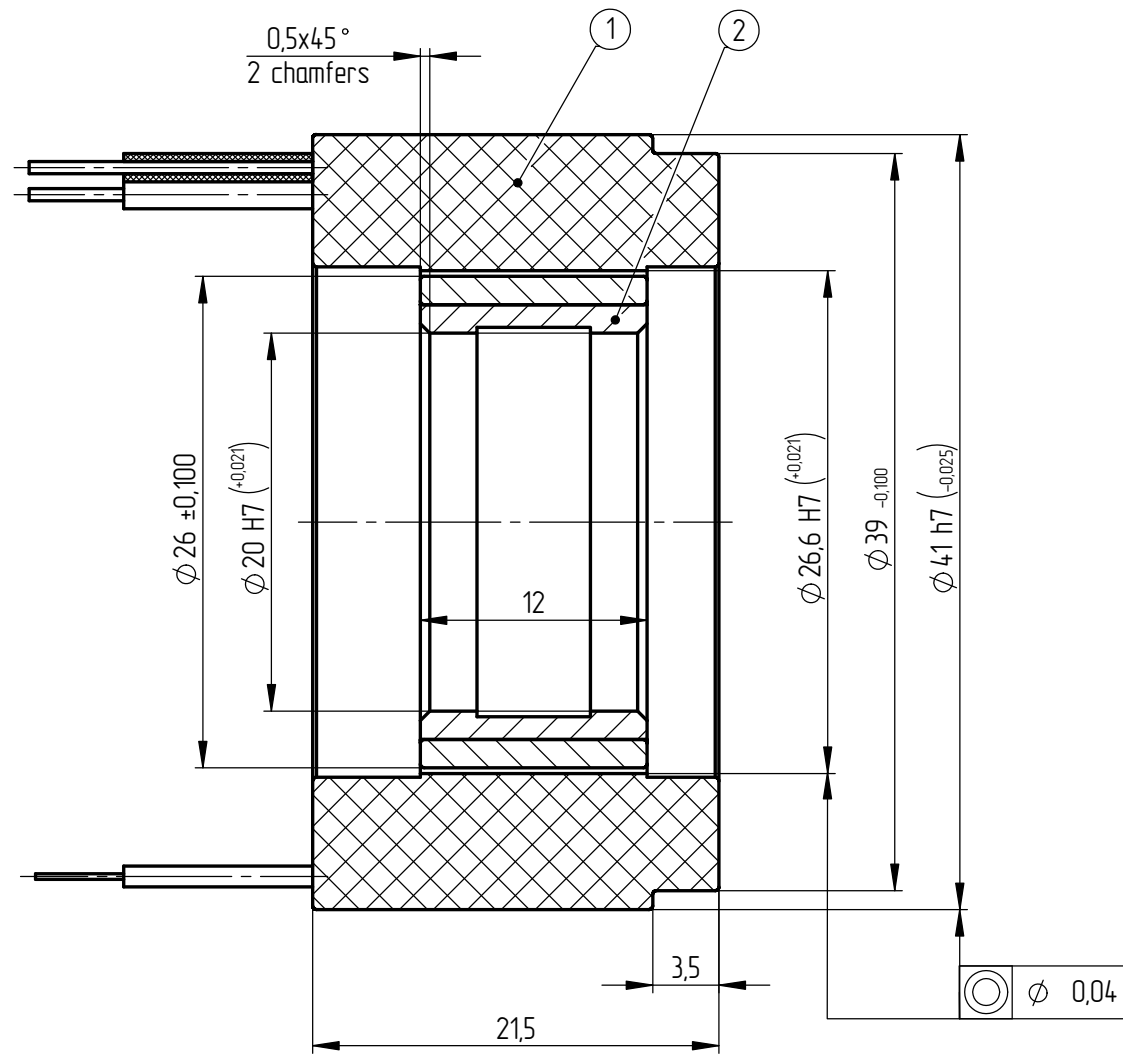


Fig.1 A rotor assembled with a stator



Motor:
3 outputs $\phi 1,5$ mm. AWG22
min. length 200mm.
Black

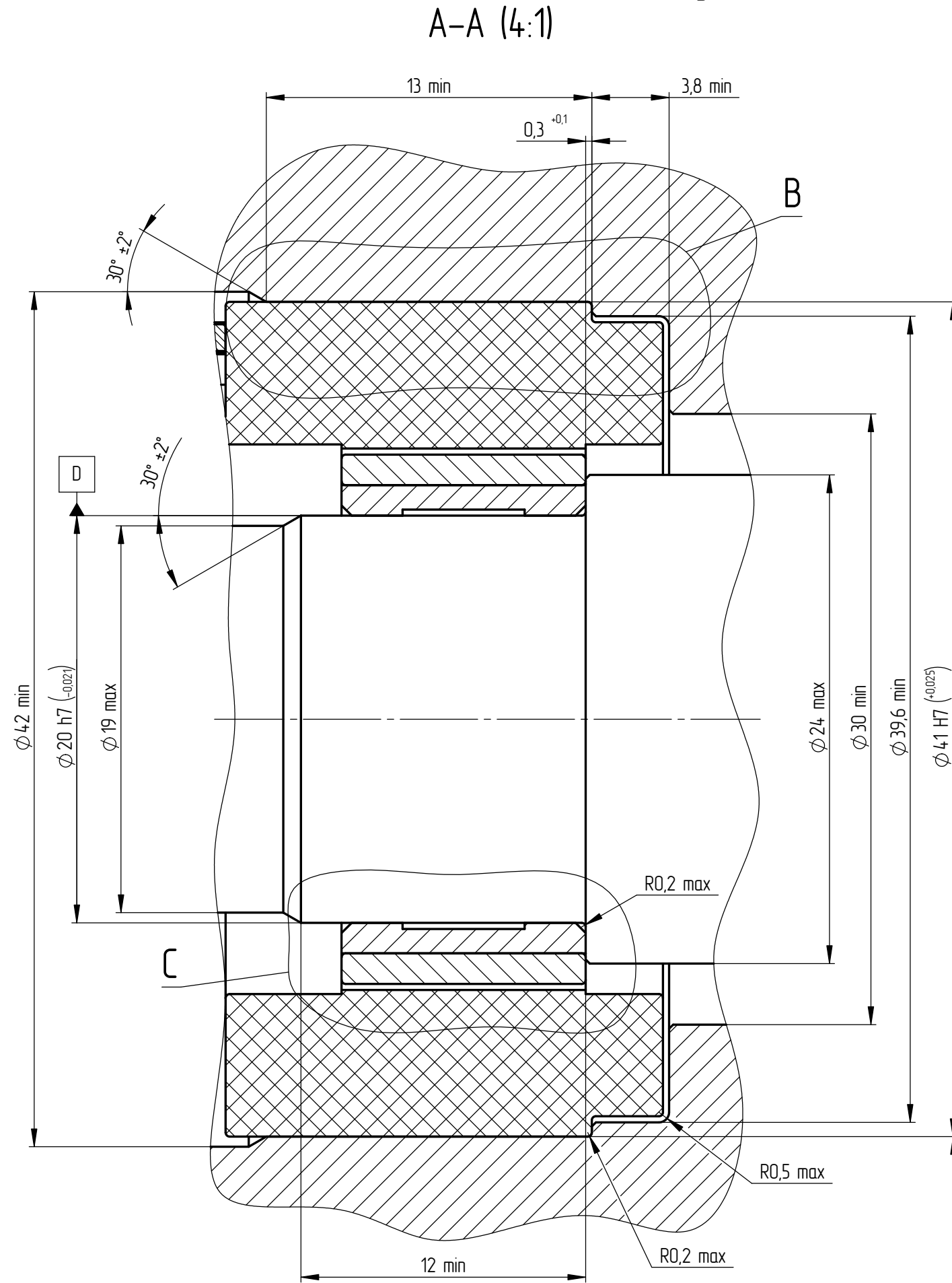
Thermal sensor NTC:
2 outputs $\phi 1,1$ mm. AWG26
min. length 200mm.
brown and blue

1. The dimensions are for reference.
2. Round off sharp edges to a chamfer of $0,2^{+0,2} \times 45^\circ$ or a radius $R0,2^{+0,2}$.
3. The unspecified radiuses of fillets are $R0,5$ max.

	Identification	Designation	Q-ty
1	BLSD.010201.010	Stator	1
2	BLSD.010201.020	Rotor ring	1

					BLSD.010201.000 Г4		
					Frameless motor FM1501201 Dimension drawing		
Rev.	Sheet	Document №	Signature	Date	Letter	Weight	Scale
		Rabtsevich				0,09	2.5:1
Designed by					Sheet 1 of 2 sheets		
Checked by							
T. check							
Norm.check							
Appr. by							

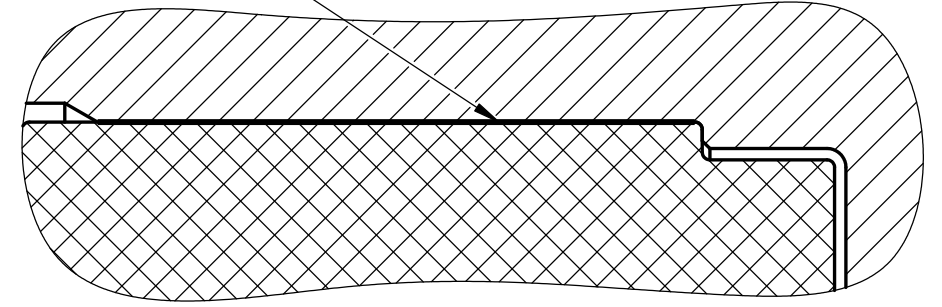
Fig. 2 The rotor-stator assembly in a housing



⊙ φ 0,05 D

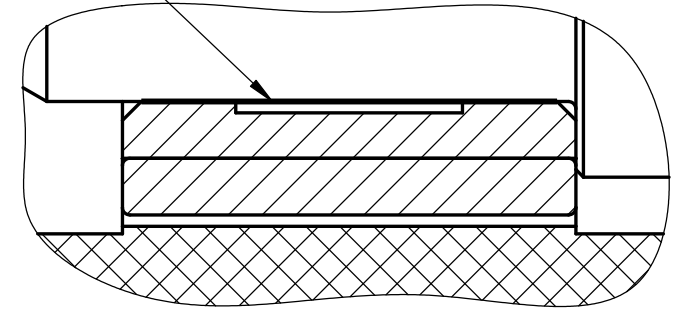
B (5 : 1)

Loctite 648 or analog



C (5 : 1)

Loctite 648 or analog



Инд. № подл.	Взам. инд. №	Инд. № дудл.	Подп. и дата

Rev.	Sheet	Document №	Signature	Date